

HEALTHY **RESIDENTIAL** CONCEPT



OUR MISSION

Creating healthy spaces



Paul Renson

“Renson® specialises in ventilation, sun protection and outdoor. With experience dating back to 1909, and an integrated team of over 1600 employees, we develop systems and solutions which provide consumers with a healthy and comfortable

living and working environment, also taking into account energy efficiency and the use of renewable energy. We develop innovative products and systems, and offer total solutions to make every house into a healthy and comfortable home.

“We appreciate the aesthetic values of every building, allowing our sun protection and ventilation systems to be incorporated invisibly. Our outdoor products and aluminium blades for covering façades provide clear accents, offering added value to the architecture. Inside, we ensure that doors are integrated invisibly with no conspicuous frames or visible joints.”

Discover how Renson® products can optimise the comfort experience while guaranteeing a contemporary design.

“We develop innovative products and systems allowing for aesthetic integration in every building.”



COMFORTABLE LIVING STARTS WITH **RENSON**®

Renson® is innovation with a clear vision: ensuring the occupant's health and comfort, whilst taking energy efficiency and the added value of aesthetics into consideration.

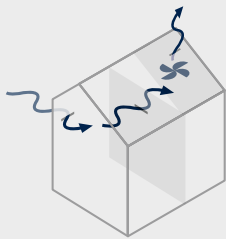
The continuous supply of fresh air and the extraction of contaminated air through a demand-driven ventilation system enable you to breathe healthy air at all times.

Intensive ventilation and exterior window blinds allow the warmth of the sun to enter when required, but prevent unnecessary cooling costs on warmer days.

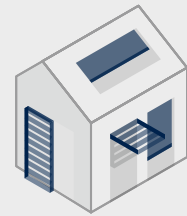
The outdoor coverings ensure a pleasant ambiance so you can live outside throughout the year, without any hindrance from excessive sun, rain, wind or cold.

Whether you want something eye-catching ... or not: aluminium blades provide striking façades with straight continuous lines. The ventilation and sunscreen systems are hardly noticeable from the inside, while invisible door systems ensure that closed doors and walls appear as one, without any disruptive frames and hinges.

HEALTHY INDOOR AIR QUALITY



CONTROLLED INDOOR CLIMATE



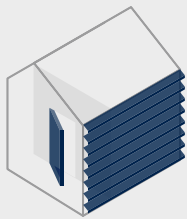
Ventilation

Sun control

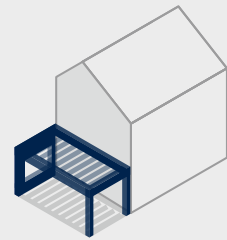
Façade cladding

Outdoor living

ARCHITECTURAL UNITY



CONTROLLED OUTDOOR CLIMATE





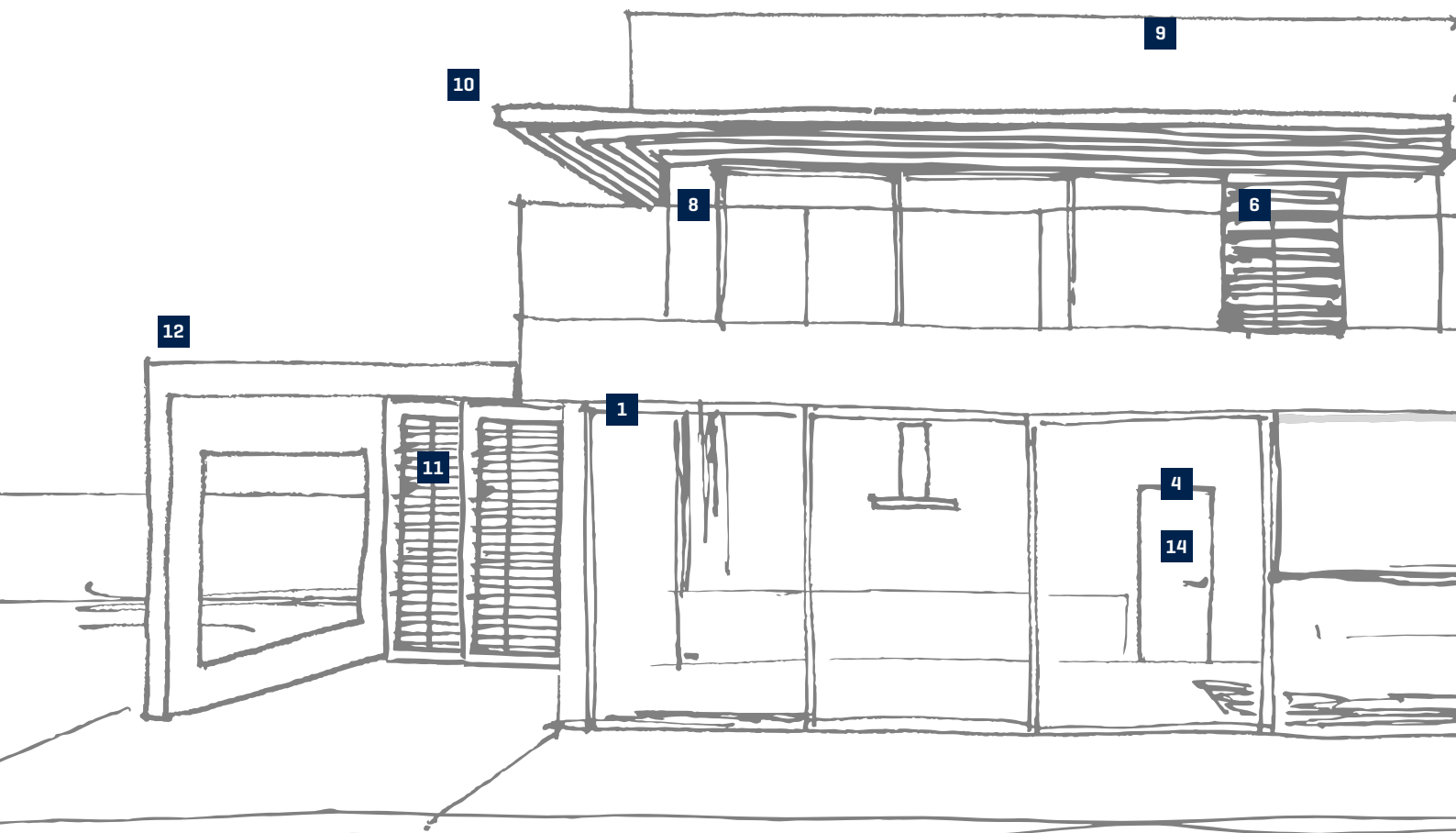
To achieve optimal living comfort, it is important to take account of the orientation of the building, the influence of the different seasons, and the lifestyle of the people who live or work in this environment.

That's why it's important to evaluate the different systems during the design phase and incorporate the most suitable elements in the design. This ensures home owners optimum, long-term enjoyment of their home.

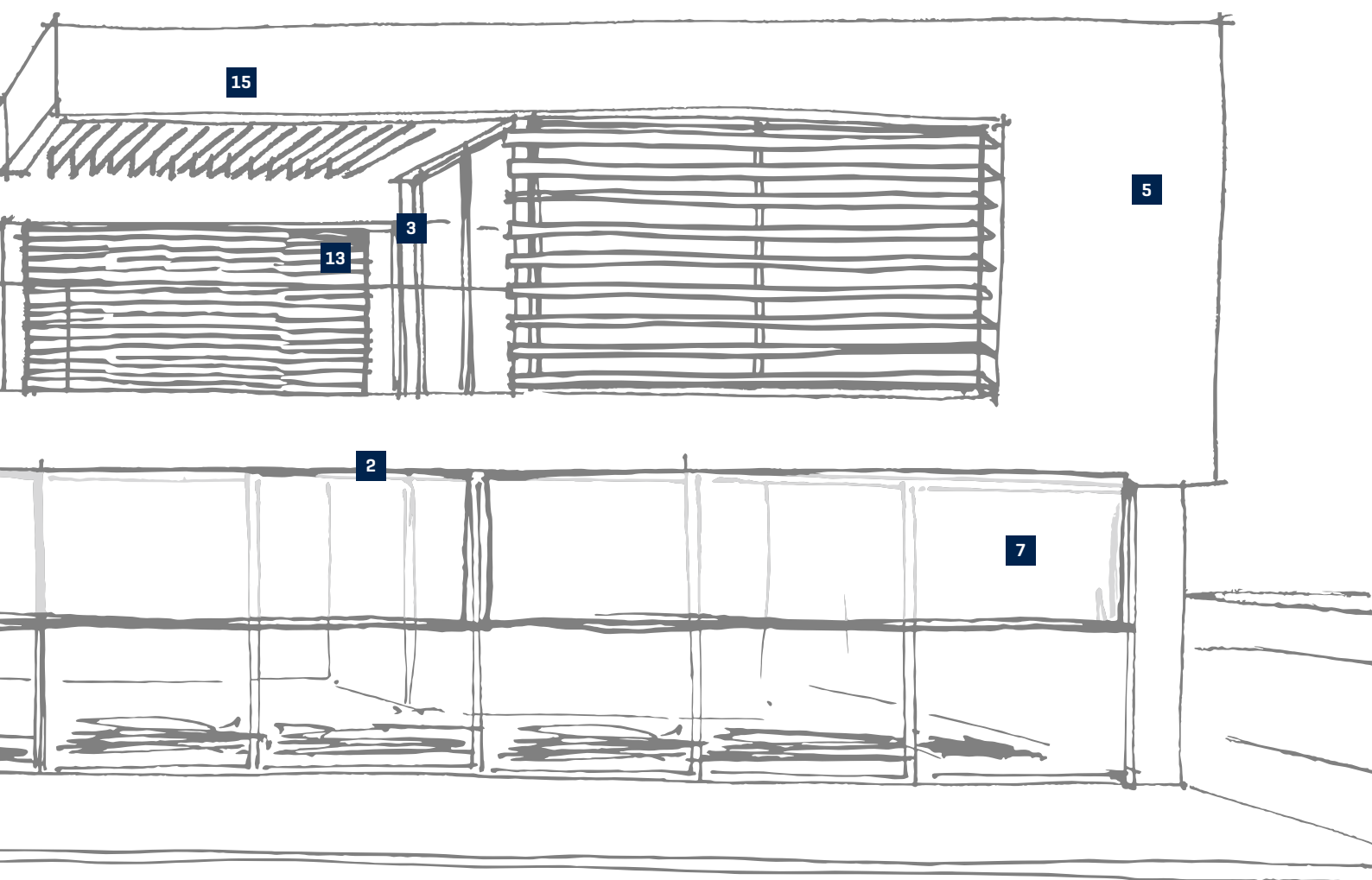


OUR SOLUTIONS

- 1 Invisivent®** p.15
Natural ventilation supply
- 2 Fixvent®** p.17
Ventilation & Sun control
- 3 Endura Twist®** p.19
Ventilation supply & transit
- 4 Invisido®** p.21
Ventilation transit
- 5 Healthbox® 3.0** p.25
Mechanical ventilation
- 5 Endura® Delta** p.28
Mechanical ventilation



- | | | | | | |
|-----------|--|------|-----------|---|------|
| 6 | Nightcooling
Ventilative cooling | p.31 | 11 | Loggia®
Structural sun control | p.51 |
| 7 | Fixscreen® (Minimal)
Sun control | p.37 | 12 | Camargue®
Outdoor coverings | p.53 |
| 8 | Panovista®
Sun control | p.45 | 13 | Linus® / Linarte®
Façade cladding | p.60 |
| 9 | Topfix®
Sun control | p.47 | 14 | Arлу®
Invisible door solutions | p.63 |
| 10 | Sunclips®
Structural sun control | p.49 | 15 | eSafe®
Parcel mailboxes | p.65 |



WHY VENTILATE?

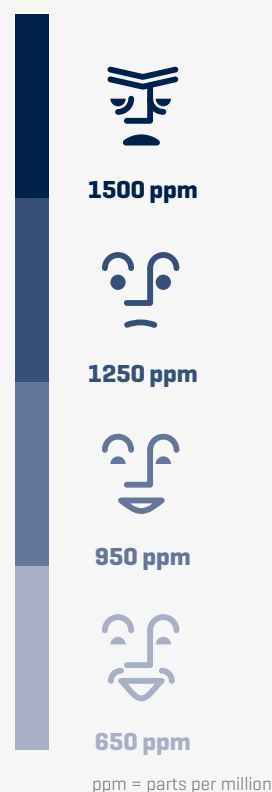
A house is alive. Its occupants pollute the indoor air by breathing and sweating. However, their activities [cooking, showering, heating, smoking etc.] as well as the house itself [volatile organic compounds such as formaldehyde and terpenes] also contribute to inferior air quality. High levels of insulation and insufficient ventilation produce musty, polluted air and create a breeding ground for annoying moulds, viruses and bacteria. Fluid accumulation, CO₂ and high concentrations of dangerous gasses [such as radon] are also among the risks.

In the long term, a poor indoor climate can damage the health of the occupants. Respiratory problems, a dry throat, eye irritation, headaches, allergies, loss of concentration, low energy or sleepiness are only some of the possible effects. That is why it is extremely important to ventilate thoroughly and regularly.

GOOD FOR THE OCCUPANT AND THE HOUSE

Many people are convinced it is necessary to open the windows from time to time to allow fresh air coming in. However, the impact is temporary and local. Moreover, ventilating with open windows is not controlled, which results in a loss of precious energy. Open windows are also associated with noise and are an invitation for burglars and annoying insects.

Demand controlled ventilation is your only guarantee of an efficient and healthy indoor air quality.



THE HEALTHY RESIDENTIAL CONCEPT: THE PRINCIPLE OF SUPPLY, TRANSIT AND EXTRACTION IN 6 STEPS

The mechanical ventilation is particularly suitable for both individual houses and for apartments having their own dedicated ventilation system. Whether the purpose is to introduce ventilation in large or small new build or renovated properties, the demand controlled ventilation of the Healthbox 3.0 complies to the needs of the habitants.

The concept which guarantees optimal air quality while maintaining low energy consumption in the house, is defined in 6 steps:



1 Self-regulating window vents

The self-regulating flap ensures that there is a constant air flow rate despite changes in wind speeds outside. With this type of regulation Renson® window ventilation systems can guarantee a comfortable, healthy air supply without the nuisance caused by draughts.

2 Transit

The flow of air through doors can be provided by door grilles such as the Silendo [an acoustically damping door louvre] or the Invisido [a discreet louvre above the door].

3 Extraction points

The design extraction grilles permit the extraction of polluted air while maintaining the aesthetic looks.

4 Easyflex

The airtight air duct system of Renson®, Easyflex [superior class D], extracts the polluted air in an efficient way.

5 Demand-controlled extraction

The extracted air flow is regulated individually per room by the Healthbox 3.0, based on the detection of the air quality per room. The extracted air flow rate can be limited when the air quality is good, while still providing a healthy indoor environment.

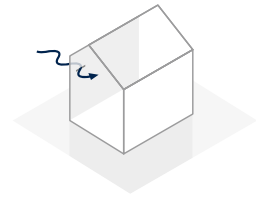
6 Roof outlet

The roof outlet extracts the polluted air to outside. Renson® has created a roof outlet with low air resistance, so the Healthbox 3.0 consumes less energy in extracting the air.

Invisivent® AK



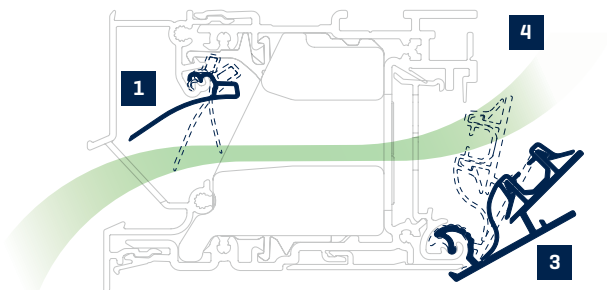
VENTILATION: SUPPLY/TRANSIT/EXTRACTION



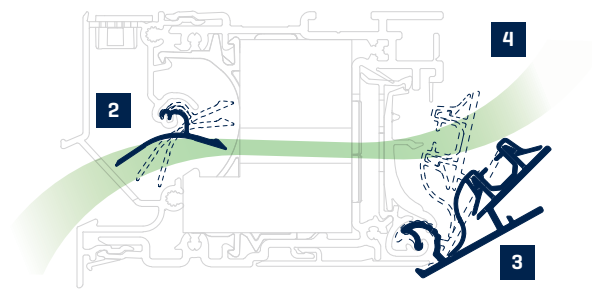
I-FLUX® TECHNOLOGY



Thanks to the application of i-Flux technology, Renson® can guarantee maximum comfort with minimum energy loss. i-Flux technology is based on the following three principles:



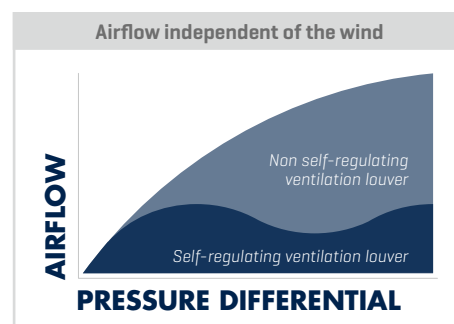
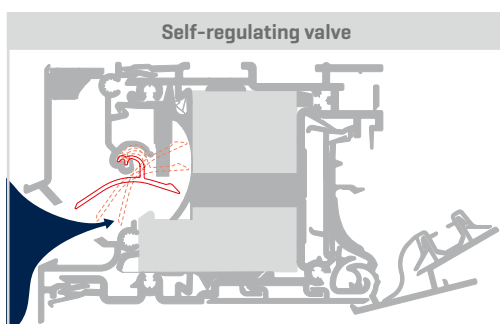
Invisivent® AIR



Invisivent® COMFORT

1 AIRFLOW INDEPENDENT OF THE WIND

The use of a self-regulating valve that reacts to changes in pressure makes it possible to maintain a constant airflow even in case of wind gusts, and keeps out draughts. Self-regulation is expressed in different classes, from class P0 [not self-regulating] to P4 [excellent self-regulating].



2 MINIMAL ENERGY LOSS DUE TO THE NON-RETURN VALVE

Because the valve of the Invisivent COMFORT is a self-regulating non-return valve, any energy loss from the inside out is avoided.

3 AIRFLOW DETERMINED WITH MANUALLY ADJUSTABLE INNER VALVE

The user can determine the desired airflow, e.g. according to the number of people in the room.

4 UPWARD AIRFLOW FOR OPTIMUM COMFORT

The shape of the inner valve conducts the fresh air upwards, leading to optimal air distribution throughout the room and guaranteeing maximum comfort.



Invisivent®

INVISIVENT® AIR & INVISIVENT® COMFORT

Natural air supply

With this new range, the focus – now more than ever – is on **energy, acoustic, and thermal comfort**. Furthermore, these new window ventilation systems are even more attuned to the intelligent Healthbox 3.0 ventilation unit, thus guaranteeing **optimum indoor air quality** at all times. Faster installation (monobloc principle), higher stability on the window, and a totally airtight finish are also priorities in the installation process.

The **Invisivent AIR** is an acoustic, thermal, and energy-efficient window ventilation system. The Invisivent AIR can easily be used in any project, be it a new-build or renovation project.

The **Invisivent COMFORT** goes a step further and guarantees even higher sound reduction and even more thermal and energetic comfort thanks to the integrated, self-regulating non-return valve. The Invisivent COMFORT is always combined with an extraction point in the same room (Healthbox 3.0, SmartZone configuration), thus limiting the loss of energy and uncontrolled ventilation even more.

Self-regulating
as from
2 Pa

Self-regulating
as from
10 Pa



BENEFITS

- ⊕ Healthy and natural ventilation
- ⊕ Draught-free thanks to self-regulating flap
- ⊕ Discrete positioning
- ⊕ Burglar proof
- ⊕ Rain- and insect repellent
- ⊕ Maintenance-friendly

Fixvent® Mono AK



FIXVENT® MONO AK

Discrete ventilation, sun control, acoustic comfort and insect screen in one

In addition to providing sun control, the Fixvent Mono AK also ensures ventilation and draught-protection thanks to the self-regulating flap which regulates the supply of fresh air. Wind resistant up to 130 km/h in closed position is guaranteed with the Fixscreen technology. Moreover, the screen can be used as an insect screen when closed.



BENEFITS

- ⊕ **Integrated ventilation & sun control**
- ⊕ **High level of acoustic and thermal comfort**
- ⊕ **Draught-free thanks to self-regulating flap**
- ⊕ **Darken at the touch of a button** [optionally with Light-block]



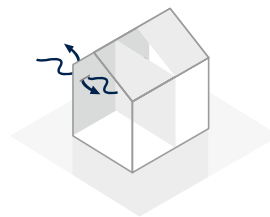
AIR TIGHTNESS

The air tightness of the house is demonstrated by the Blowerdoor test. This allows you to calculate air loss at a pressure differential of 50 Pa. The low leak flow of the Renson® window ventilators are measured according to EN1026 and are not decisive for the result of the blower door test.



Endura® Twist

VENTILATION: SUPPLY/TRANSIT/EXTRACTION



DEMAND-CONTROLLED* DECENTRAL MECHANICAL VENTILATION WITH HEAT RECOVERY

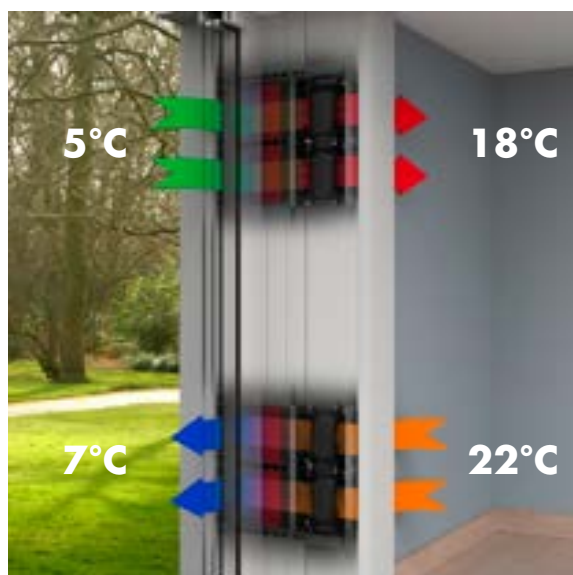
ENDURA® TWIST

The Endura Twist is a decentral mechanical ventilation with warmth recuperation which stores the heat of the indoor air in its regenerators. As the fans turn every 30 seconds, the regenerators pass the stored heat to the fresh incoming air, creating a pleasant preheated air being blown into the room.

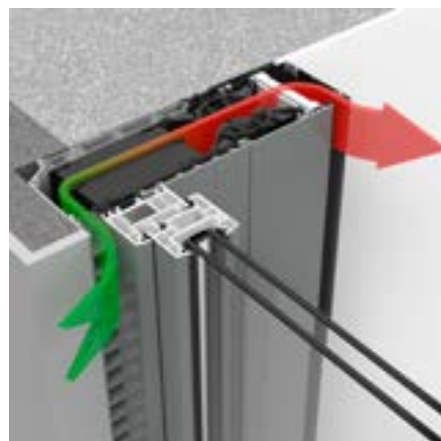
Due to the continuous cyclic operation of the alternating fans, which ensures a **constant air supply and air extraction**, the customer can enjoy an optimal air quality at any time. The quick installation without ducts and easy maintenance make the Endura Twist ideal for both **new-builds** as **renovations**.

Thanks to its **innovative twisting technology**, the economical and highly efficient Endura Twist can boast with a thermal efficiency up to 81%.

Available for both **horizontal** installation (on top of the window profile) and **vertical** installation (perfectly combinable with screens/ roller shutters)



Endura Twist horizontally



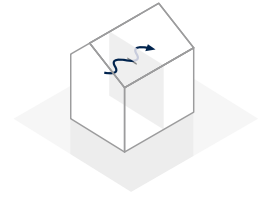
Endura Twist vertically

* with TouchDisplay with CO₂-sensor



Invisido®

VENTILATION: SUPPLY/**TRANSIT**/EXTRACTION



INVISIDO®

Discrete transit above the door

Invisido is a discrete door grille, almost invisible. Because this grille is mounted on top of the door, an aesthetically disruptive opening beneath the door is no longer required. The unique design blocks see through and guarantees sufficient air transit from one room to another.



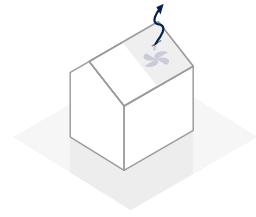
BENEFITS

- ⊕ Discrete - fully integrated
- ⊕ No see through
- ⊕ Suitable for all door thicknesses from 35 mm
- ⊕ Suits every interior
- ⊕ Guaranteed air flow - 25 m³/h
- ⊕ Sound reducing - 28 dB
- ⊕ Draught-free



design grille

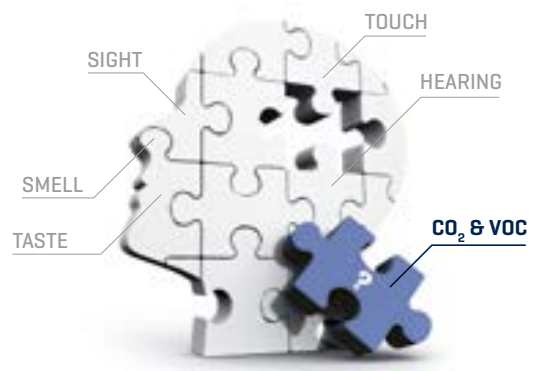
VENTILATION: SUPPLY/TRANSIT/EXTRACTION



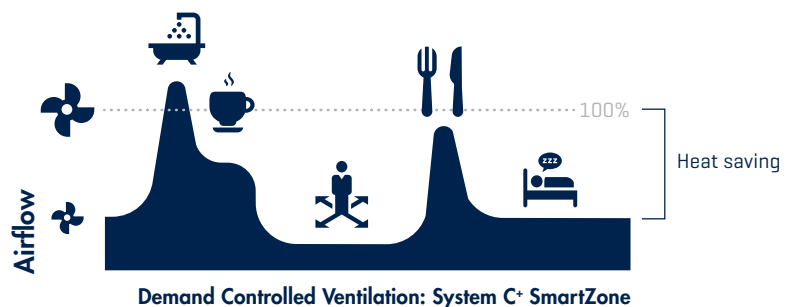
THE IMPORTANCE OF DEMAND-CONTROLLED VENTILATION

Correct ventilation is required to achieve optimum indoor air quality. It is important to extract polluted air from rooms and ensure it is replaced with fresh air.

People themselves are not able to detect changes in air quality. So we can't detect when certain concentrations of CO₂ or VOC become too high. We therefore can't expect the occupants of a house to assess how much ventilation is required to achieve a healthy indoor air quality.



That is why it is important for the level of ventilation to be adapted automatically to the ventilation needs. The ventilation level can be automatically adapted to anticipate the different phases of the day using integrated, intelligent sensors in the central demand-controlled ventilation unit. This automatic adaptation saves 30 to 50% of energy as compared with a permanent ventilation flow.





< 90 cm >

DEMAND-CONTROLLED MECHANICAL VENTILATION

HEALTHBOX® 3.0

Demand-controlled ventilation

The Healthbox 3.0 measures air quality in the form of relative humidity, CO₂ or VOC [Volatile Organic Compound] concentration (odour) round the clock in each wetroom. The air extraction rate is varied automatically with the individual parameters according to the measured air quality. If the air quality in a wetroom is satisfactory, the flow is reduced. The Healthbox 3.0 is fitted with 7 connections, extendable up to 11 with the valve collector. In addition to the wetrooms, the sleeping accommodation can also be ventilated (SmartZone) and better air quality is achieved. The best possible air quality, with low CO₂ concentrations consequently guarantees a peaceful night's rest.

With **automatic calibration**, manual ventilation control is now a thing of the past. The complete system analyses how many rooms are connected and defines the air pressure set-up required for each room, so that the desired airflows are achieved. This generates a considerable cost saving and avoids any errors in the setting, because the setting is matched to the ventilation device and not to the design grid, so that the settings cannot be adjusted, for example while cleaning.

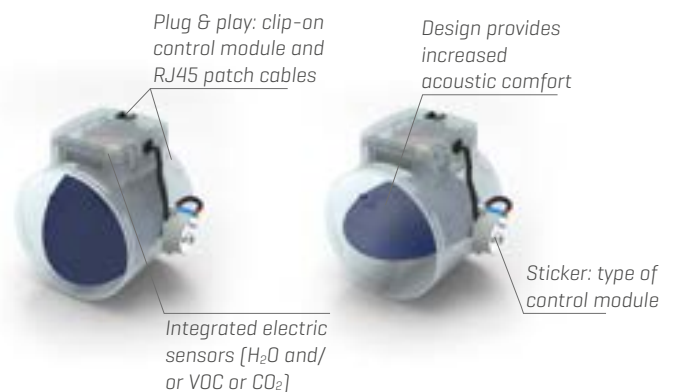
SmartConnect

Integrated SmartConnect means that the Healthbox 3.0 can communicate with the user (via the app) and with other smart devices. This is how the Healthbox 3.0 is in the Smart Home family and thus guarantees a high degree of total comfort.

The corresponding app gives the user a view into the air quality and ventilation activity in the home. It also allows various profiles for matching the ventilation class to the user's requirements.



VENTILATION



BREEZE-FUNCTION

If there is a high demand for cooling, for example in summer, the Breeze function switches demand control off, so that the ventilation capability can be used to best effect.



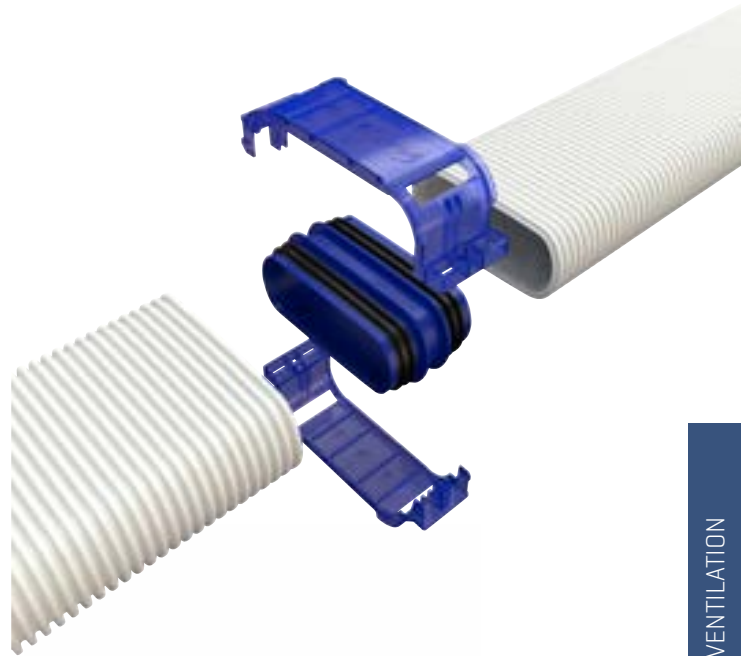
Design grill

EASYFLEX®

Flexible duct system

Easyflex is a semi-rigid, corrugated air duct made out of polyethylene with an external diameter of 140 x 64 mm or \varnothing 90 mm. The smooth inner surface of the double walled air duct is treated with antistatic and antibacterial additives to prevent dust accumulation and bacteria outbreaks.

The limited height of the Easyflex air duct allows it to be installed easily into false walls/ceilings, in concrete or screed. A high air flow combined with a low air speed guarantees a silent air duct system.



Flat oval



Round \varnothing 90



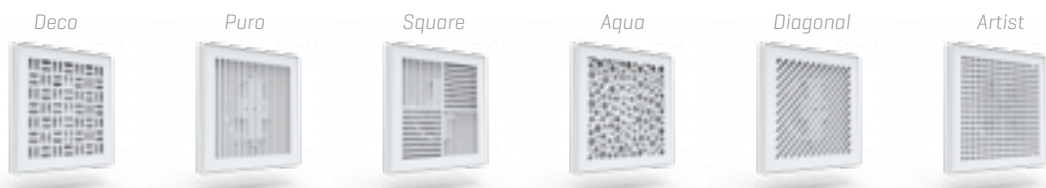
BENEFITS

- ⊕ Flexible duct system
- ⊕ Large air flows at low air speeds
- ⊕ Compact and easily installed into false walls/ceilings, in concrete or screed.
- ⊕ Treated with antistatic and antibacterial additives
- ⊕ High acoustic comfort
- ⊕ Airtightness D (top class)

ALUMINIUM DESIGN GRILLES FOR EXTRACTION

These aluminium design grilles have been developed for installation in or on the ceiling (or wall), for plasters, plasterboards or MDF surfaces. These grilles are available in RAL 9010 matt (white) as standard but can be recoated in other colours. With a choice of 6 different designs, they can be combined to suit every style of decoration. The grilles come

with a connection for a diameter of 80 or 125 mm. Design grilles have no damper control blades and are therefore noiseless; the central ventilation unit is responsible for regulation. The design grilles can therefore always be perfectly cleaned without disrupting the ventilation system.



THE DEMAND- AND APP-CONTROLLED VENTILATION WITH HEAT RECOVERY

ENDURA® DELTA

The Endura Delta outperforms regular heat recovery units as it is standard equipped with integrated air quality sensors and is immediately ready to start ventilating any home based on the measured humidity, CO₂ and VOC-level. It consists of 4 top connections [T4] or 2 top/2 bottom connections [T2/B2], both available in 3 different flow rates.

The Endura Delta is equipped with dynamic sensors that continuously monitor the extracted air for CO₂, humidity and/or harmful VOCs [volatile organic compounds]. On the basis of these measurements, the Endura Delta will adapt the

ventilation rate to your living pattern, thus creating a smart and energy-saving form of ventilation.

Within a constant air flow, there is not only useless energy consumption, loss of heat and sound emission. There will also be insufficient ventilation when needed.

Opposed to a constant air flow, the Endura Delta detects that the humidity of the extracted air increases whenever somebody takes a shower. It then temporarily increases the extract air flow rate until the humidity level has sufficiently gone down again.



330 T4



330 T2/B2



380 T4
450 T4



380 T2/B2
450 T2/B2

Endura® Delta App

As an innovative ventilation specialist, Renson® has set itself the objective to transform every home into a healthy and comfortable living environment. The Endura Delta – a demand-controlled ventilation system with integrated heat exchanger – can be controlled by smartphone or tablet. The app also provides information about the functioning of the system and the air quality in your home.

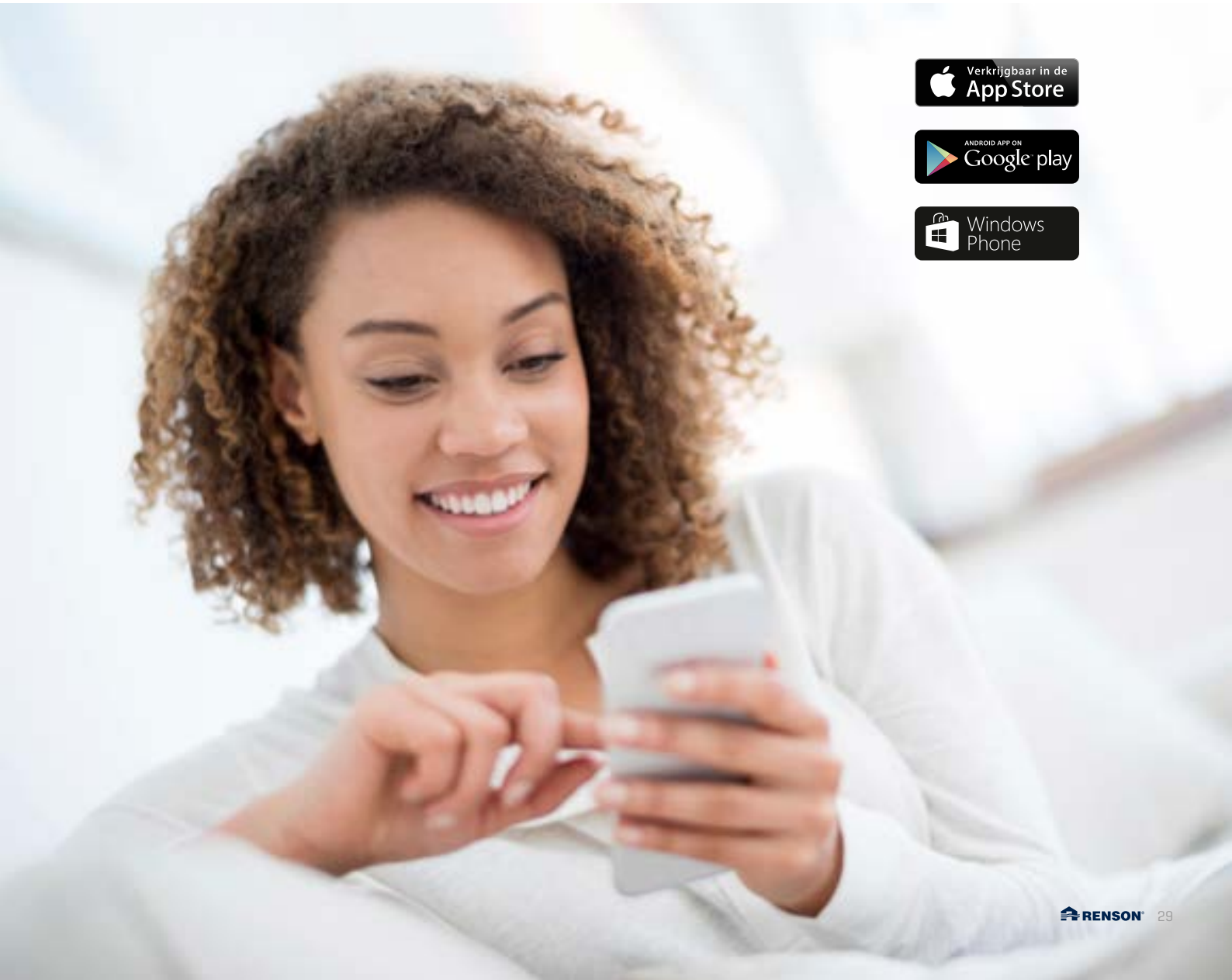
The Endura Delta app allows you to:

- Control the system by quickly and intuitively navigating through the various menus
- Check the status of the ventilation system. The app offers you feedback on the total air flow, the relative humidity level,

the indoor air quality, the inside and outside temperature and the filter status.

- Set timers that allow you to make temporary changes to the current ventilation program
- Configure the unit [installer]
- Fill in a measurement report and register the unit [installer]

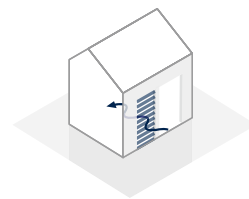
Ventilation is made easy by the Endura Delta app!





Ventilative cooling

VENTILATION: VENTILATIVE COOLING



WHY CHOOSE VENTILATIVE COOLING?

Ventilative cooling, also known as “nightcooling,” is the principle where cooler outside air is used to naturally cool down the house.

With ventilative cooling, large natural air flows are conducted into the house via louvres. This air circulation extracts warm air thus cooling the house. The night coolness is stored in thermal mass of the house and is released during the day, creating a pleasant indoor climate. And this is all completely free of charge. To use nightcooling in a house, one or more louvres are located outside the window. Ventilative cooling requires high air flows.

That is the reason for selecting louvres with a large air throughput, which also ventilate reliably. The louvres are water and insect proof thanks to the design of the blades and integrated insect screen. This allows the windows to be open at night in order to cool the room. In new buildings, nightcooling is built into the design of the house. In existing houses a louvre can simply be installed in front of each opening window.



Louvre type 431
This surface mounted louvre ensures secure ventilation of your home.



Louvre type 432
To ensure increased light inflow in winter, and for temporary removal, the Renson® louvre is simply removable. The louvre is fixed from the inside to ensure risk-free ventilation.



Louvre type 424RC2 [WK2]
For extra secure ventilation, a burglar proof louvre is used for ventilative cooling.

WHY CHOOSE EXTERNAL SUN SCREENS?

Saving energy is one of the key challenges in new construction and renovation. Windows play a vital role in this process.

COMFORT TAILORED TO EACH SEASON

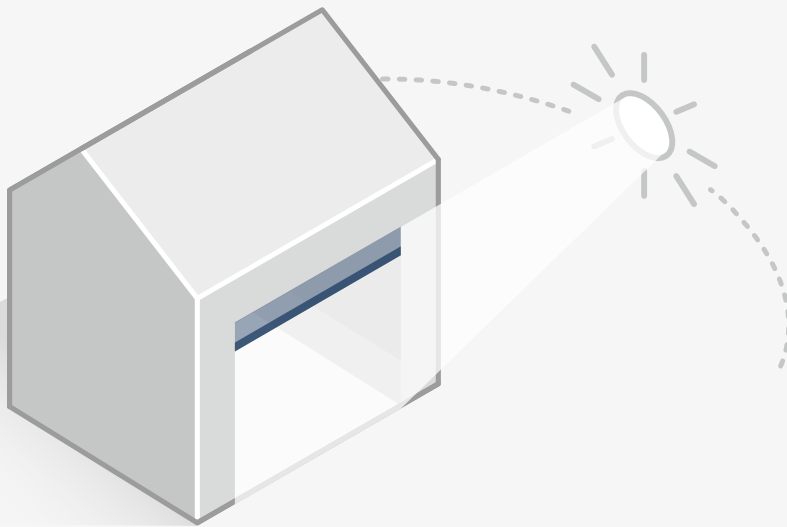
Large glass panels are frequently chosen in contemporary architecture. Today's high-performance glazing ensures good insulation and plenty of natural daylight guarantees optimal energy consumption and increased comfort in the home. Artificial, energy-intensive light does not suit pleasant, bright living spaces. During the winter months, a low sun also ensures pleasant warmth in the house, which means there is less need to use heating.

Everyone knows however that the sun can also influence the indoor climate less positively. Excessive sunlight can cause overheating, disruptive reflections on screens and discoloration of the furniture and decor.

An efficient outdoor sun protection - sun control blades for the frame, brise-soleil above the window, sliding panels or wind-resistant screens - enables the occupants to enjoy the sun at any time of the advantages of the day. These systems stop the sun rays from heating the indoor air, without disturbing the view of the garden.

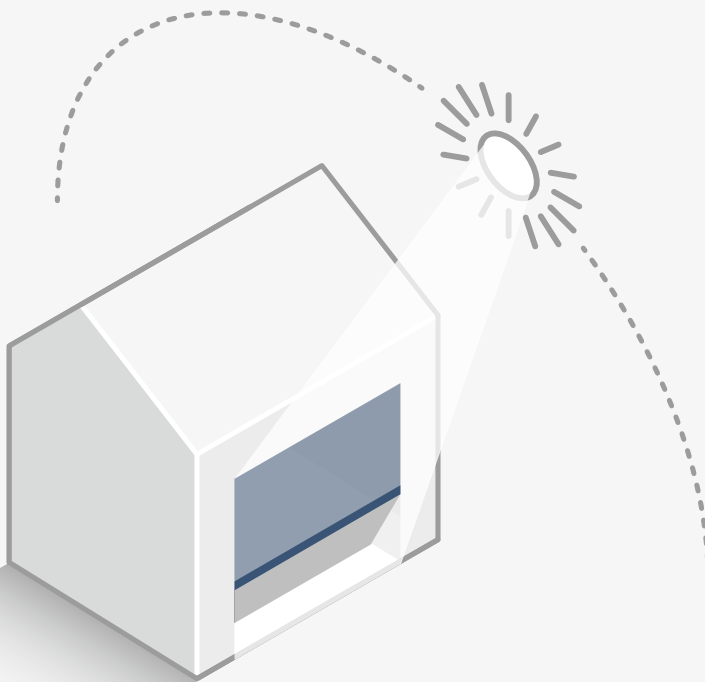
Dynamic outdoor sun protection provides extra efficiency by keeping out the excess sun when necessary but still be able to enjoy the pleasant solar gains in the winter.

“Outside sun control, guaranteeing comfort at 3 levels: thermal comfort, visual comfort and aesthetic comfort.”



Winter

When there is a low-lying sun it is important to maximise solar gains (warmth and light) to increase comfort and limit energy loss.



Summer

When the sun is high in the sky it is necessary to limit solar gains using an efficient outdoor sun protection. The application of screens and awnings avoids energy-wasting cooling and limits disruptive reflections without losing the view of the garden.

Fixscreen® 150



SUN CONTROL: SUN PROTECTION



WHY CHOOSE SUN PROTECTION/EXTERNAL BLINDS?

Design

Renson® emphasises on design. With a large range of colours for the fabric and aluminium components, discrete integration into the façade and wrinkle-free fabric, the sun protection/external blind is seamlessly integrated into your home. Dimensions up to 6m width or 6m height are possible (up to 27,8 m²).

Comfort

Sun protection/external blinds not only ensure a comfortable indoor climate, they also prevent annoying reflections or glare, without disturbing the view of outside. The sun protection can be fully automated for maximum comfort. This enables you to maintain an optimal temperature.

Sustainability

Thanks to the Fixscreen technology, screens/external blinds can be operated even with wind resistance up to 130 km/h, which corresponds to a hurricane of 12 Beaufort.

Wind tunnel test:



Non-wind resistant
screen at 30 km/h



Fixscreen® at 130 km/h



Watch the video of our
wind tunnel tests here

FIXSCREEN®

The stylish design, the unprecedented wind resistance and wide range of sun protection fabrics make Fixscreen a technological innovation, both in terms of comfort, ease of use and aesthetics. The Fixscreen can be applied in private housing, office buildings or project construction. Moreover, thanks to the unique Fixscreen-technology, Fixscreen guarantees a tight screen in any weather condition. Fixscreen is branded as Renson® Zipshade in Northern America.

1. APPLICABLE TO LARGE GLASS SURFACES

Up to 22 m² surface.

2. DURABLE ZIP GUIDE WITH SMOOTH-TECHNOLOGY

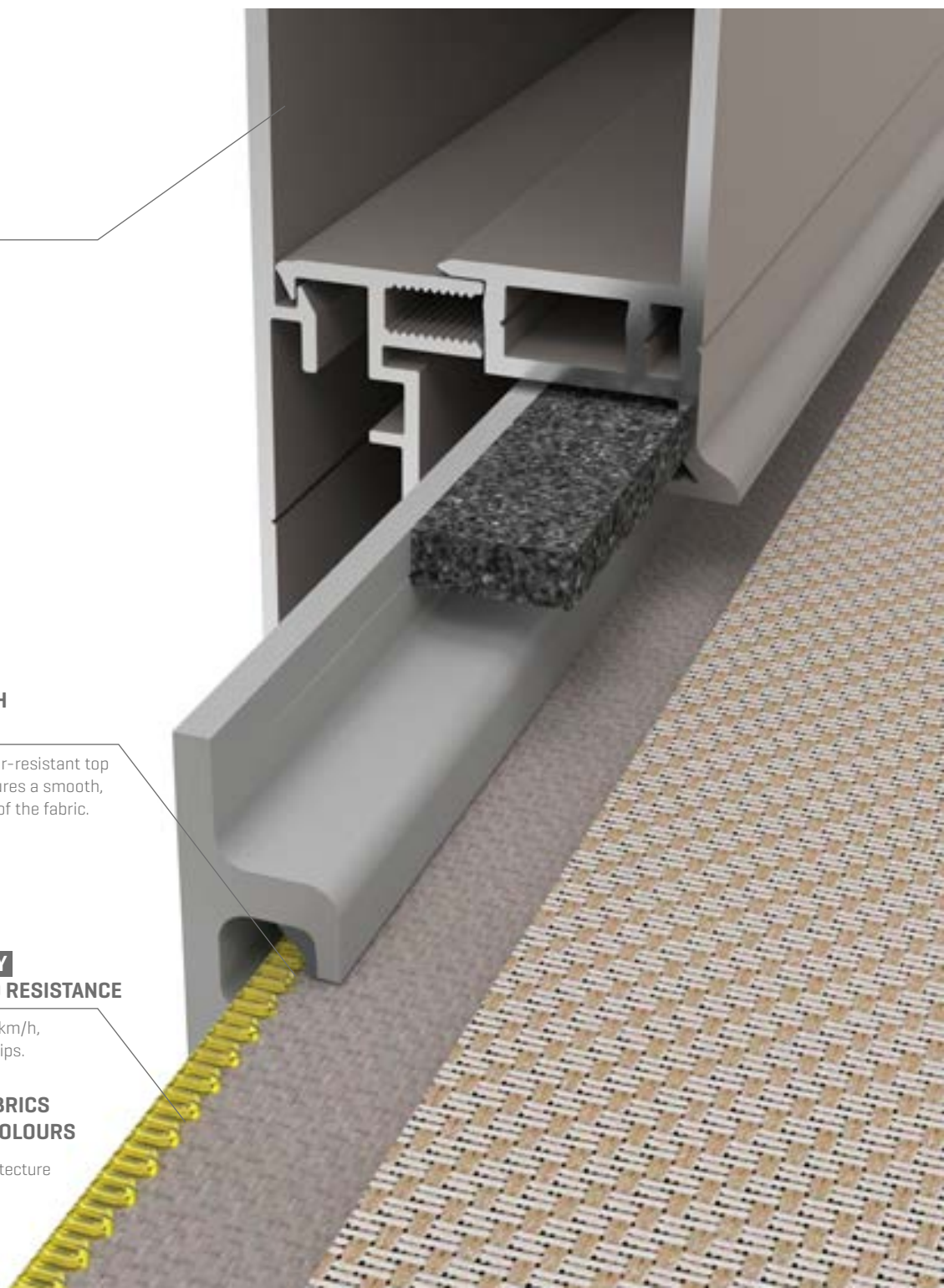
The patented, co-extruded, wear-resistant top layer in our HPVC zip guide ensures a smooth, durable and soundless guiding of the fabric.

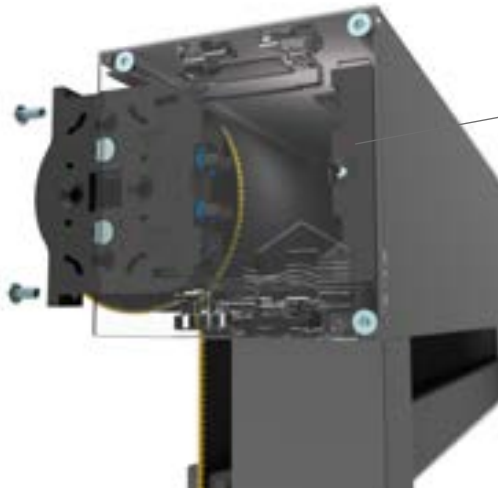
3. FIXSCREEN-TECHNOLOGY GUARANTEES HIGH WIND RESISTANCE

High wind guarantee up to 130 km/h, due to the use of symmetrical zips.

4. VAST COLLECTION OF FABRICS AND POWDER COATING COLOURS

Perfect alignment with the architecture





5. QUICK, SAFE INSTALLATION AND DISMANTLING OF FABRIC SET

Thanks to Connect&Go-technology.



6. UNIQUE FABRIC TUBES FOR REDUCED HORIZONTAL LINE FORMATION IN THE FABRIC

The standard **recessed fabric tube** is fitted with a unique recessed groove to limit the impression of the fabric eyelet. The Fixscreen Minimal, Fixscreen 100 MS1, Fixscreen SLIM MS7, and free-standing models also have a **detachable click profile** for large widths. This ensures easy [dis]assembly when replacing the fabric.



7. SIDE GUIDING CHANNEL FOR HIDING CABLES

For Fixscreen 100 et Fixscreen 150 (F) an open **side guiding channel S** is available. This side guiding channel has an extra channel to conceal the cable.



8. THREE-PART SIDE GUIDING CHANNEL FOR EASY ACCESS AFTER INSTALLATION

For Fixscreen 100 Slim (F) and Fixscreen 150 IM7 (F), Panovista (Max), it is possible to choose a deep side guiding channel D. This side guiding channel consists of 3 parts and has a U-profile, which allows for easy disassembly of the screen set; without complete disassembly of the side guiding channel, without drilling or channelling, which guarantees water and wind proofing



Headbox

Side channel

The headbox

The box profile is made of extruded aluminium profiles with sleek minimal lines.



Square design



Soft design

The bottom bar

The extruded aluminium bottom bar is weighted with galvanised steel to achieve optimum performance and fabric tension. For perfect sealing, the base bar is equipped with a uPVC sealing strip.



- 5-year product warranty for normal household use and regular maintenance. [for Panovista Max subject to a maintenance contract]
- 5-year warranty on gloss level on aluminium profiles.
- 5-year warranty on the electronic control j [Somfy® motorisation & automation].
- 5-year warranty on the fabric collection.
[Crystal window 2-year warranty]



- 7-year warranty on Fixscreen-technology for Fixscreen, Fixscreen Minimal, Panovista, Topfix [VMS] and Topfix Max - zip remains in the side guiding channel - optimal attachment of the zip to the fabric
- 7-year warranty on Panovista Max-technology in case of annual maintenance.
- 7-year warranty on Detecto motor
- 7-year warranty on Fixscreen Solar kit [motor, battery & solar cell]
- 5-year warranty on Fixscreen-technology for freestanding applications of Fixscreen, Fixscreen Minimal and Topfix Max.



- 10-year warranty on coating of aluminium profiles.

BENEFITS

- ⊕ **Extremely wind-proof screen**
- ⊕ **Privacy**
- ⊕ **Light control**
- ⊕ **Heat and energy control**

- ⊕ **Insect repellent**
- ⊕ **Silent operation**
- ⊕ **Simple operation**
- ⊕ **Simple maintenance**

- ⊕ **Simple assembly**
- ⊕ **Large dimensions [up to 22 m²]**
- ⊕ **Joinable**
- ⊕ **Unspoilt outside view**

Fixscreen® 150 IM7



FIXSCREEN® RECESSED INSTALLATION

Invisible, discrete installation

With installation method 7 [IM7] the fabric roller is accessible for installation and maintenance from underneath. With this method it is possible to fully conceal the screen in the cavity. This installation method is the perfect solution for low-energy homes and passive houses, since there is no need to penetrate the outer shell of the house.

- For all window types: aluminium, wood, PVC
- For new builds/private house construction and projects

The Fixscreen 100 Slim version enables the sunscreens to be integrated in an even narrower cavity [box depth of 110 mm]. An additional benefit is the fully retractable bottom bar in the box.

Fixscreen® 100 Slim - IM7A



Fixscreen® 150 - IM7A



BENEFITS

- ⊕ Fabric set accessible removable from outside and below
- ⊕ Recessed installation
- ⊕ Ideal for low-energy houses
- ⊕ Insect repellent
- ⊕ Ideal for extension by integration into the passage
- ⊕ Conservation of privacy
- ⊕ Up to 22m²



FIXSCREEN® SOLAR

With the Fixscreen 100 Solar, Renson® has developed a wind-resistant, surface-mounted screen on solar energy. A solar cell mounted on the front of the box ensures autonomous control of the screen and therefore does not require any electrical cabling. Therefore, these wind-resistant screens can be easily mounted to your window without any demolition work being required for electrical work. This makes the Fixscreen 100 Solar the perfect renovation solution

Fixscreen® Minimal

FIXSCREEN® MINIMAL

Minimal windows? Minimal screens...

Of course, you would prefer to enjoy the maximum possible amount of daylight in your house during the day. This can be perfectly achieved today with large windows and 'minimal windows'. But what if indoor temperatures become unbearably high on hot days? This is where screens offer the most efficient solution, by preventing sunlight from even reaching your window glass. The best part is that with the Fixscreen Minimal, you will never have to compromise on the sleek appearance and modern look and feel of your home. With side guiding channels of just under 20 mm in width and slimmer screen fabric boxes, they are barely visible, while your windproof and dynamic sun protection screen allows you to enjoy pleasant indoor temperatures throughout the year. Combined with a silent motor and blackout fabric, this product is also the ideal solution for maximum darkening bedrooms from the inside.



reddot winner 2022



BENEFITS

- ⊕ Perfectly in line with minimalist windows for both new constructions and renovations
- ⊕ Dimensions up to 27,8 m²
- ⊕ Wind guarantee up to 130 km/h
- ⊕ Silent motor available for indoor use
- ⊕ Minimum head box size and wide range of side guiding channels [20mm] for seamless integration in the façade



FIXSCREEN® MINIMAL SOLAR

The Fixscreen Minimal IM1 Solar is the newest product within the Fixscreen Minimal range. While developing the Solar version, the essence of the Fixscreen Minimal range was kept in mind. Ease of installation was again paramount, resulting in a completely screwless plug-and-play system. The product is available in the Small head box with dimensions 90 mm x 115 mm. Maximum surface area of 10m²



Panovista® Max

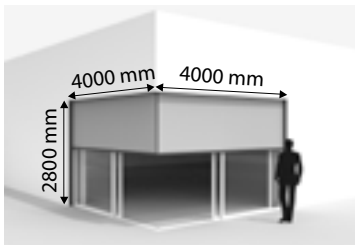
PANOVISTA® FOR GLASS TO GLASS CORNER WINDOWS

A new range of screens for glass-on-glass corner windows

'Invisible architecture' is a new trend highly compatible with the trend towards minimalism. The Panovista is Renson's perfect response to this development. This new development is perfect for applications with glass-on-glass corner windows when there are no satisfactory solutions with conventional screens. Further, the Panovista can be integrated almost invisibly into the architecture of the building. There are no aluminium side guides or cables in the corner.

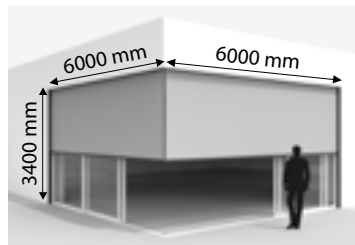
Two types of boxes:

- Panovista: maximum width of 4000 mm on each side with a maximum height of 2800 mm. Yearly maintenance is advised.
- Panovista Max: maximum width of 6000 mm on each side with a maximum height of 3400 mm for a maximum surface area of 30 m². Yearly maintenance is mandatory.



Max. total surf.: 22.4 m²

Panovista® [no middle zip]



Max. total surf.: 30 m²

Panovista® Max [with middle zip]



reddot design award
winner 2018

* Wind load after Renson® specifications

BENEFITS

- ⊕ The panoramic outside view is unrestricted
- ⊕ The box and side guides can be aesthetically hidden away
- ⊕ Simultaneous movement of the both sides with a single motor
- ⊕ The zip on the corner automatically zips the two fabrics together
- ⊕ Combines perfectly with other Renson® screens

Ταβήχ[®] Max



TOPFIX[®], TOPFIX[®] VMS AND TOPFIX[®] MAX

The range of screens for horizontal windows

This sun protection screen enables optimal management of the incoming sunlight in all horizontal or inclined glazing (verandas, skylights, etc.).

Topfix[®]

Topfix is a motor-operated horizontal sun screen equipped with a revolutionary span system combined with the renowned Fixscreen technology. This makes it possible to achieve unequalled tensioning of the fabric, which eliminates the need for traditional fabric supporting rolls. The Topfix with can handle up to 12 m² with the compact box. The box can be installed on top, sideways or at the bottom.



Box on top



Box sideways



Box at bottom
[indoor application]

Topfix[®] VMS

The Topfix VMS features a revolutionary tension technique, made possible by the renowned Fixscreen technology and has been specifically developed for the VELUX Modular Skylights modules. The Topfix VMS can be installed above the fixed and movable modules e.g. with special mounting feet, enabling a perfect installation onto the VELUX Modular Skylights.

VELUX

Topfix[®] Max

Topfix Max allows the rolling of the fabric from top to bottom, from bottom or to top depending on the required aesthetics. Blackout is also achievable with indoor and outdoor applications. For the Topfix Max, widths of up to 5 m, and extremely large surfaces of up to 30 m² are possible.



Box on top



Box at bottom
[outdoor application]

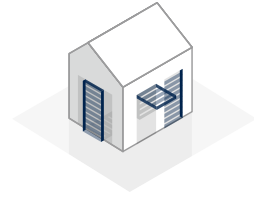
BENEFITS

- ⊕ **Guaranteed at wind speeds up to 120 km/h**
- ⊕ **Perfect fabric tension without fabric support rollers**
- ⊕ **Compact headbox dimensions**
- ⊕ **Topfix[®] Max up to 30 m² per module**



Sunclips®

SUN CONTROL: STRUCTURAL SUN CONTROL



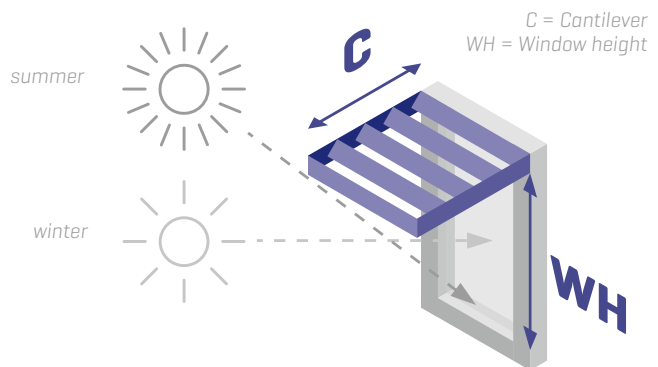
HORIZONTAL STRUCTURAL ALUMINIUM SUN CONTROL

Horizontal shading offers the ideal solution for managing heat entry through sunlight, without impeding the view. Applied especially above window frames in south-facing windows.

During summer, when the sun is high, horizontal sunscreens offer ideal protection. During winter, when the sun is low, they let heat into the building.

Recommended overhang of the brise-soleil

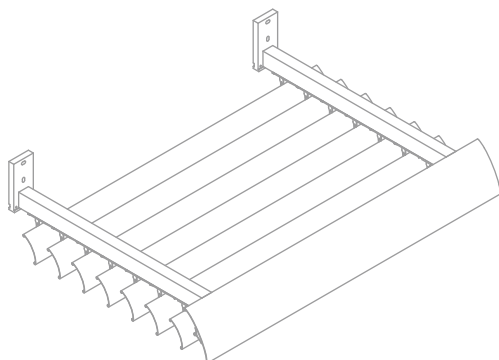
To achieve optimal results with the canopy it is important that the cantilever is properly tuned to the situation. The orientation of the façade and the height of the window shade are crucial elements. The dimensions of the cantilever recommended by Renson® in the table to the right, is calculated to ensure 75% of total warmth radiation is kept out during the summer by the cantilever.



Orientation of the façade	E	SE	S	SW	W
Recommended cantilever C	1.2 x WH	0.8 x WH	0.5 x WH	0.8 x WH	1.2 x WH

Programme available for specific calculations

Sunclips® [SE.096]





Loggiawood®

Loggialu

Loggialu Plano

Loggiawood

Loggialu Privacy
[rotating blades]

Loggiawood Privacy
[rotating blades]

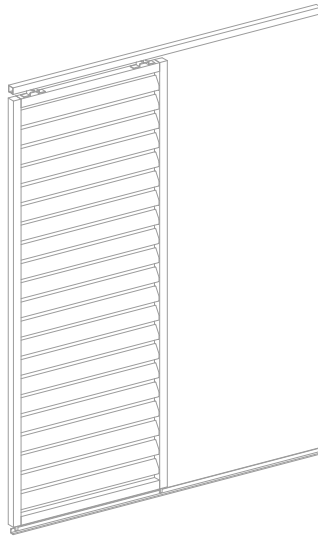


LOGGIA®

You control the amount of light that comes in

The Loggia sliding panels combine the functionality of an efficient sun screen panel with the elegant look and aesthetic design within a high-quality and contemporary concept. With the vertical sun screen sliding panels, the owner can even influence the way sunlight enters rooms [i.e. dynamic sun protection].

The Loggia panels are constructed from aluminium frames finished with screens, and aluminium or wooden blades. It is also possible to opt for movable aluminium or wood blades, which can be manually rotated from the closed position to the fully open position, or vice versa.



BENEFITS

- ⊕ Multipurpose façade elements
- ⊕ For simple and flexible use
- ⊕ Aesthetic quality finish
- ⊕ Motorized option

Loggiascreen
Canvas

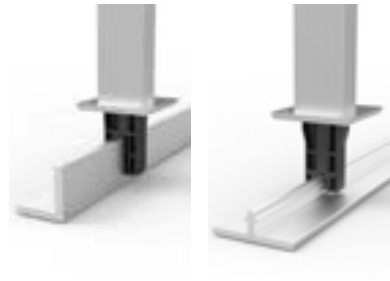
Loggialu Wooddesign



FLEXGUIDE®

The Flexguide is a self-regulating under-guide that uses spring tension to adjust itself to height differences with respect to inclines, construction tolerance, thermal dilatation, etc. It eliminates the need to place filling material under the under-guide profile to level out slopes [up to 50 mm].

The under-guide profile should be secured normally to the base. The Flexguide spring-loaded pin must always remain in contact with the under-guide profile, on inclines or uneven surfaces, or if the dimensions change, for example, due to temporary loads or thermal dilatation.



Privacy

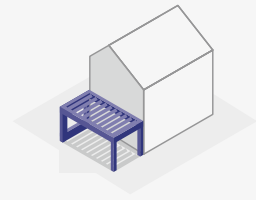
Privacy with rotating wooden or aluminium blades





Camargue®

OUTDOOR LIVING



Whatever the weather, we like to spend as much time as possible outside. Our gardens are no longer separate from our houses. Together they are one. That is why we long for more atmosphere, comfort and optimum lifestyle pleasure. Being outside becomes living outside!

Translucent blade Linea® Luce



Side elements



Who wants to live outside has to consider nature's elements. If the sun becomes too hot, it starts to rain, or the wind suddenly blows harder, we have to run inside. Or don't we? Outdoor coverings are the solution. Available in all colours, adapted to the style of the house, free-standing or fixed to the house or an existing [roof] structure.



Integrated lighting



Audio and heating

These comfortable outside spaces ensure a good atmosphere, but also warmth and cosiness. When it gets darker at night, simply switch on the integrated lighting. Even if it gets colder, you can still stay comfortably outside. Depending on the size of the patio cover, one or more heating elements can be included. You can even play your favourite music on the terrace thanks to the incorporated speakers.

SQUARE DESIGN



LOUVERED ROOFS
(rotatable louvered roof)

LOUVERED ROOFS
(rotatable and retractable louvered roof)

FIXED ROOF

CAMARGUE® LINE

CAMARGUE®



This innovative and modular mountable patio cover can be supplemented with perfectly integrated side elements.

CAMARGUE® SKYE



A fully closable patio cover with rotatable and retractable aluminium blades. Here too, side elements can be perfectly invisibly integrated.

INCLINED DESIGN



RETRACTABLE
fixscreen roof

LAPURE®

LAPURE®



Minimalist patio cover with water, wind and sun resistant screen roof and open panoramic view.
Side elements are possible in surface mounted.

ALGARVE® LINE

ALGARVE®



A horizontal sun and water resistant roof with tiltable aluminium blades. Side elements are possible in surface mounted.

AERO® LINE

AERO®



Horizontal sun and water resistant roof with tiltable aluminium blades, perfectly integrable into new or existing structures.

AERO® SKYE



Aero Skye with rotating and retractable blades to create a panoramic view. With Aero Skye Dual, the blades slide open from the centre without interfering transverse profile for spans up to 11.75 m.

ALGARVE® CANVAS



Covering with fixed roof, aesthetically finished with fixed ceiling with Fixscreen-technology.

AERO® CANVAS







Camargue® Skye



Camargue®



Camargue®



Skye®

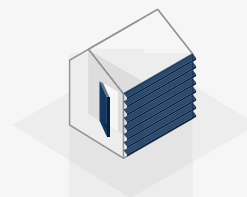


Algarve®



Linarte®

FAÇADE CLADDING



Renson® also thinks about the durable aesthetic finish of the façade and indoor. We include architectural cladding of the façade, which makes a house really stand out in the street. The ventilation and sun control, on the other hand, are hardly noticeable inside. And thanks to the invisible door systems, we perfectly anticipate recent developments in minimalistic and pure architecture in contemporary homes.

Aluminium blades add a unique and pure look to the outdoor façade of your home. The Linius wall-mounted blade system ensures continuous façades with clean lines into which even the doors and garage doors can be integrated. Available in all possible RAL colours, adapted to the joinery of the façade.

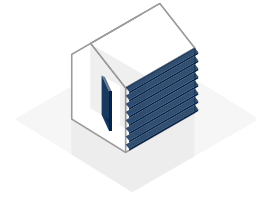
The inconspicuous integration of ventilation and sunscreens also follows this pattern. That is why ventilation louvers have evolved the last years from large block-systems on the glass to discrete flap gratings, such as the Invisivent, which are positioned almost invisibly on the window profile.

Renson® also considers the uniformity of its systems allowing the design of the ventilation and sun control system to be perfectly coordinated.

'Discrete interior doors' – the trend for a timeless interior with a consistent minimalist design. The invisible door system perfectly anticipates this recent development. Thanks to this system, the door blends into the wall, without disturbing frames and hinges.

The Invisidoor is an invisible aluminium frame for interior doors, which can be painted to match walls perfectly and is equipped with a magnetic lock, detachable acoustic seal as a door buffer, and invisible 3D-adjustable hinges of Arlu. Thanks to these hinges, the outside cylinder of the door, usually seen on the outside of the door, is no longer visible.

FAÇADE CLADDING



LINIUS®

Horizontal façade cladding

With the Linius system, façades or façade parts can be finished to create seamless wholes with a strong horizontal accent. Gates or doors can also be clad with the same profiles. This way you get a precise and tight fit with the rest of the façade to create a uniform whole. The façade system consists of individual aluminium profiles, which are available in different versions. Depending on the application, you have the choice between either completely closed or ventilating systems. Due to its high quality finish, Linius is also suitable for indoor use.



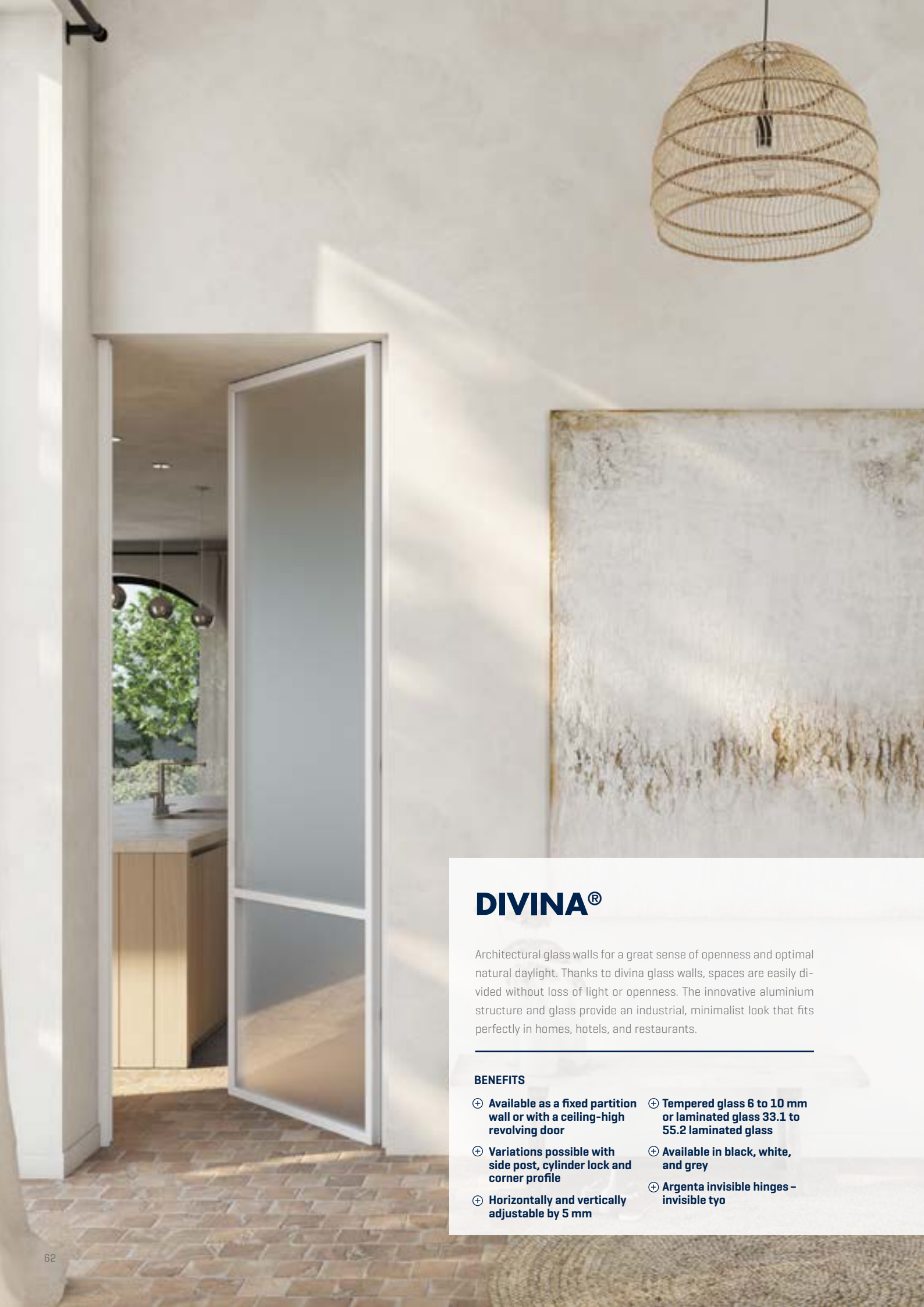
LINARTE®

Vertical façade cladding

Aluminium façade cladding with minimalist vertical lines. The profiles are available in different shapes and numerous colors, which can be combined differently. The façade can be personalized by **integrating LED-strips and wooden inserts**. Garage doors and house doors integrate smoothly into a single flush façade surface. Functional elements such as a letterbox, intercom or doorbell are seamlessly integrated. Thanks to the individual profiles, you can even finish curved façades and because of the high-quality finish, they are also suitable for indoor applications.



reddot design award
winner 2018



DIVINA®

Architectural glass walls for a great sense of openness and optimal natural daylight. Thanks to divina glass walls, spaces are easily divided without loss of light or openness. The innovative aluminium structure and glass provide an industrial, minimalist look that fits perfectly in homes, hotels, and restaurants.

BENEFITS

- ⊕ Available as a fixed partition wall or with a ceiling-high revolving door
- ⊕ Tempered glass 6 to 10 mm or laminated glass 33.1 to 55.2 laminated glass
- ⊕ Variations possible with side post, cylinder lock and corner profile
- ⊕ Available in black, white, and grey
- ⊕ Horizontally and vertically adjustable by 5 mm
- ⊕ Argenta invisible hinges – invisible tyo

INDOOR: INVISIBLE DOOR SOLUTIONS

ARLU[®]
OPENING DOORS

Arlu is part of the Renson[®] group. Arlu is already active for over 100 years in developing and producing hinges and joints for interior doors.

More information: www.arlu.be

INVISIDOOR 2.0

The doorframe of invisidoor 2.0 consists of a base profile with u-profiling, in which the position of the invisible neo hinges and the lock can be freely selected using various adapters. The base frame for doors rotating to both the left and the right is the same, meaning the rotation direction of the door can still be freely decided even after the frame has been plastered in. Once the position of the adapters has been decided, the remaining space in the u-profile is simply and neatly finished using the cover profile.



BENEFITS

- ⊕ Fire-resistant IN (inward opening) and OUT (outward opening) versions certified according to EI1 30
- ⊕ Maximum door dimensions 2660 x 1100 x 50 mm
- ⊕ Possible to upgrade an existing Invisidoor 2.0 50 to a fire-resistant door set
- ⊕ Compatible with a self-closing concealed door closer such as dormakaba ITS 96
- ⊕ Can be upgraded with an electrical strike to unlock magnetic locks from distance

PIVOTICA[®] PRO E

ARLU's new pivotica pro E 100 is a minimalist and concealed pivot hinge for pivoting internal doors, optionally with a mechanical hold-open position at 90°. When floor-mounted, the pivotica pro E is perfectly suited for installation in a fully finished door opening. It can also be built in to the floor for minimal door clearance at the bottom. The exact position of the pivotica can be chosen at will, meaning the hinge can be fitted either centrally, off-centre, or at the corner of the door. Lastly, the argenta[®] pivotica pro E is fully compliant with the EN1154 standard for door closure mechanisms. The argenta pivotica pro E is also available in a 30-minute fire-resistant version with a special interdens kit.



BENEFITS

- ⊕ Adjustable upper pivot with a compact installation height of 24,1mm, adjustable in width and depth (± 3 mm)
- ⊕ Seamless ceiling part can be plastered into the ceiling, for a seamless finishing
- ⊕ Standard lintel part with a minimal upper clearance above the door (4-6 mm)
- ⊕ New installation key provides easy control with minimal door opening at the top



18

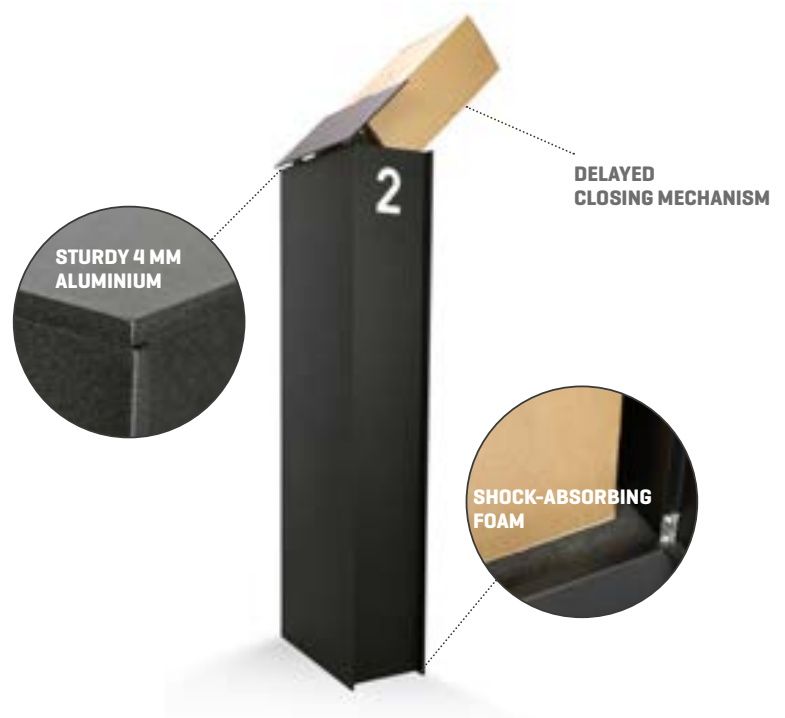
ESAFE PARCEL MAILBOXES



A driveway is invariably the calling card of a house & garden! Choosing the right style and materials will give your driveway the same look as your dream home.

More information: www.my-esafe.be/

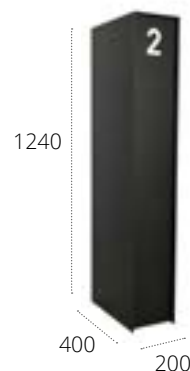
A design parcel mailbox adds the finishing touch & from now on, you will receive all your parcels safely at home 24/7. That's so much easier!



DROPBOX SMALL



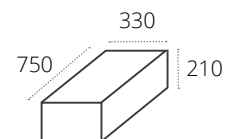
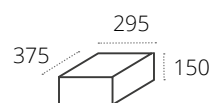
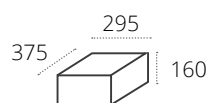
FENIX TOP MEDIUM



NEXUS

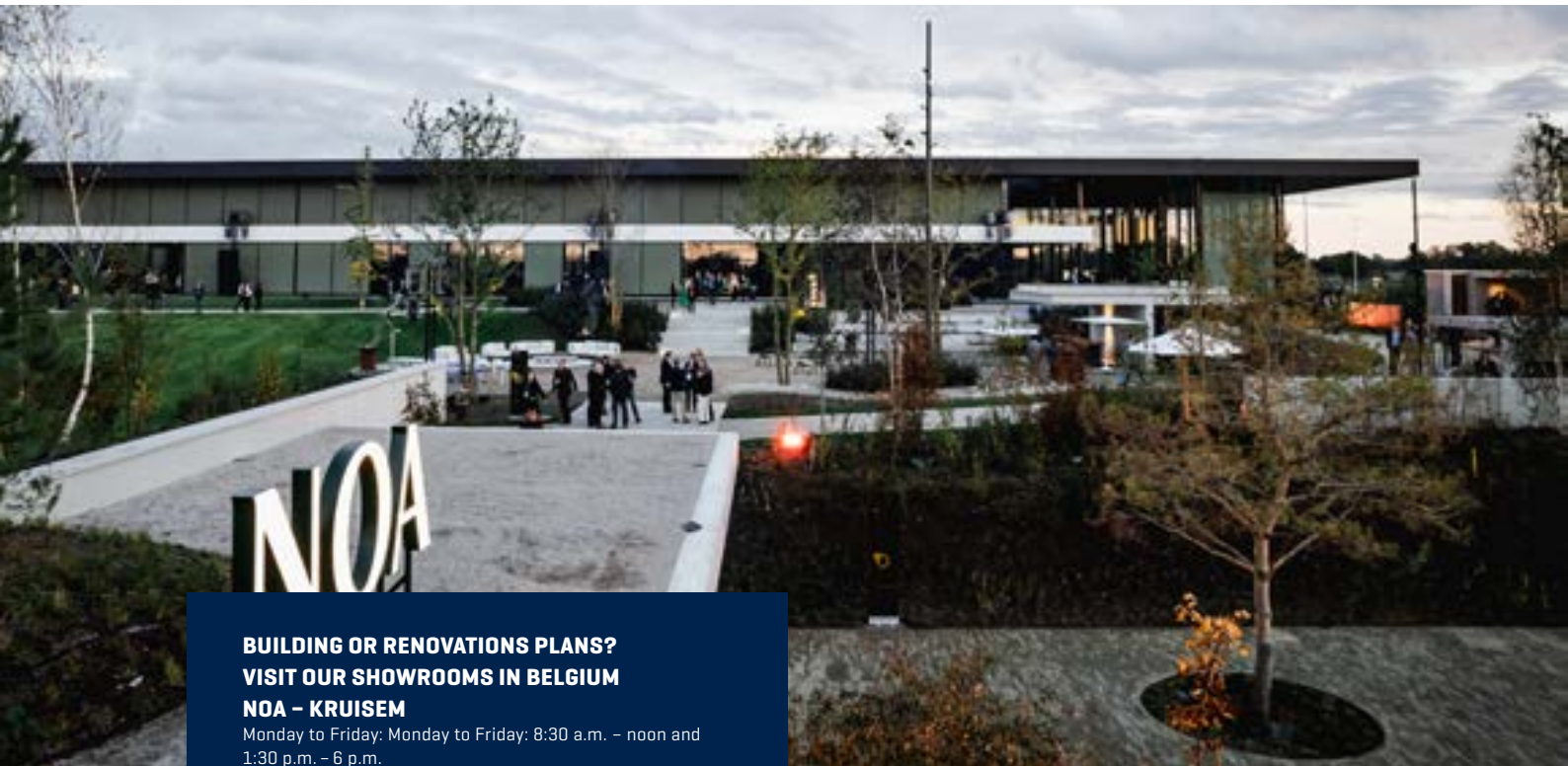


Package dimensions:



BENEFITS

- ⊕ Sleek design
- ⊕ Strong, quality powder-coating
- ⊕ Handmade in Belgium
- ⊕ Available in all RAL colours
- ⊕ Stainless aluminium
- ⊕ Personalisation & integration [number, name, intercom]



**BUILDING OR RENOVATIONS PLANS?
VISIT OUR SHOWROOMS IN BELGIUM**

NOA – KRUISEM
 Monday to Friday: Monday to Friday: 8:30 a.m. – noon and 1:30 p.m. – 6 p.m.
 Saturday: 9 a.m. – noon

Polydore Rensonstraat 8 – 9770 Kruisem – Belgium
www.noa-outdoor.com

EXIT 5 – WAREGEM
 Monday to Friday: Monday to Friday: 8:30 a.m. – noon and 1:30 p.m. – 6 p.m.
 Saturday: 9 a.m. – noon
 Make an appointment by phone on +32 (0)56 62 96 87 or online at www.exit5.be
 Maalbeekstraat 10 – 8790 Waregem – Belgium
www.exit5.be

NY SHOWROOM – USA

Ernest NY · 255 5th Avenue · 6th Floor · NY 10016
 +1 310 658 4878 · www.ernestny.com



SHANGAI SHOWROOM – CHINA

No 33, Lane 672, Changle Rd
 Jingan District
 Shanghai, China
 Tel: +86 21 6418 2566



RENSON®: YOUR PARTNER IN VENTILATION, SUN PROTECTION AND OUTDOOR LIVING

Renson®, with its headquarters in Waregem (Belgium), is a worldwide trendsetter in natural ventilation, sun control and outdoor living.

Creating healthy spaces

From 1909, we've been developing energy efficient solutions assuring a healthy and comfortable indoor climate. Our headquarters - built according to the 'Healthy Building Concept' - is a beautiful example portraying our corporate mission.

No speed limit on innovation

A multidisciplinary team of more than 80 R&D employees continually optimize our products and develop new and innovative concepts.

Strong in communication

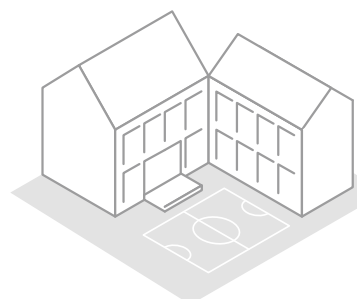
Contact with the customer is of the utmost importance. A group of 100 in-the-field employees worldwide and a powerful international distribution network are ready to advise you on site. EXIT 5 at Waregem gives you the possibility to experience our products on your own and provides necessary training for installers.

A reliable partner in business

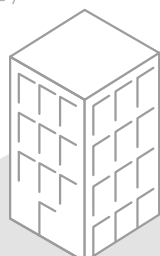
We can guarantee our customers optimal quality and service thanks to our environmentally friendly and modern production sites [with automated powder coating line, anodisation line, uPVC injection molding machinery and mold making shop] covering an area of 95.000 m².

Discover our solutions for:

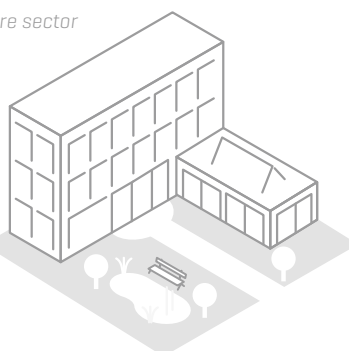
Schools



Office buildings /
Apartments



Care sector



All photos shown are solely for illustration purposes and are a snapshot of the usage situation. The actual product may vary due to product modifications. Renson® reserves the right to make technical changes to the products shown. You can download the most recent brochures at www.renson-outdoor.com



RENSON® Headquarters
Maalbeekstraat 10, IZ 2 Vijverdam, B-8790 Waregem, Belgium
Tel. +32 56 30 30 00
info@renson.eu
www.renson.eu

